

WITH A LITTLE HELP FROM MY FRIENDS

T & M: Lennon /
McCartney

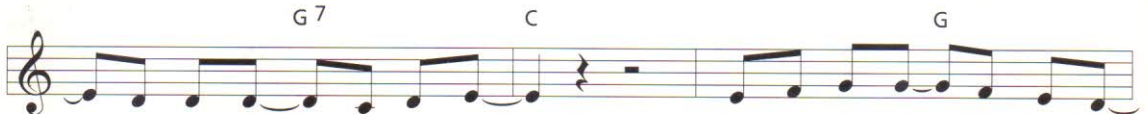
IV/12



Originaltonart: E



1. What would you think if I sang out of tune, would you stand
 2. What do I do when my love is a - way, does it wor -
 3. Would you be - lieve in a love at first sight? Yes, I'm cer -



up and walk out on me? Lend me your ears and I'll sing
 ry you to be a - lone? How do I feel by the end
 tain that it hap - pens all the time. What do you see when you turn



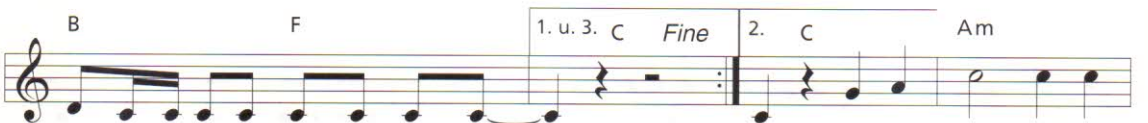
you a song and I'll try not to sing out of key.
 of the day, are you sad be - cause you're on your own?
 out the light? I can't tell you but I know it's mine.



Oh, I get by with a lit - tle help from my friends. Mm, I get high
 No, ...
 Oh, ...



with a lit - tle help from my friends. Mm, I'm gon - na .



try with a lit - tle help from my friends. Do you need an - y -



bod - y? I need some - bod - y to love. Could it be an - y -



bod - y? I want some - bod - y to love.